



Floor Plan of the Macdonald Centre



Facilities

The Macdonald Centre will offer residents an extensive range of facilities, including:

- a mini-mart selling essential supplies, convenience goods, gifts and postal items
- a café serving a wide variety of refreshments
- a dining area for more substantial lunches or, on occasion, dinner
- a hydrotherapy spa and wellness centre offering a range of health and beauty treatments
- a movie theatre for viewing large-screen sporting events and movies
- a large, multi-function recreation room with indoor bowls, snooker and pool, that can be transformed for evening shows and entertainment
- a private library and lounge area complete with computers and Internet access
- a craft room for creative and artistic pursuits
- a bar room offering exterior access to a covered, outdoor BBQ area
- an outdoor bowling green, with umbrella seating for spectators
- a nearby 'Blokes' shed' for those wishing to pursue their hobby interests
- an outdoor petanque court
- secure basement parking with electrical recharging facilities for those with mobility scooters.

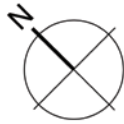
Information:

This floor plan is correct as at December 2010. Minor changes may be made to the configuration and fit-out of the building and apartments during construction. Prospective residents should satisfy themselves as to the suitability of the final product before entering an agreement. All occupation licences for units at the village are secured by a first-ranking encumbrance over the village land in favour of the Statutory Supervisor.



Gilberd Apartments - Plan of first floor

Available October 2011



Apartment floor areas

Apartment 301

- Internal area 83.5 sq.m Balcony 8.8 sq.m

Apartment 302

- Internal area 83.2 sq.m Balcony 8.8 sq.m

Apartment 303

- Internal area 78.1 sq.m Balcony 8.4 sq.m

Apartment 304

- Internal area 77.8 sq.m Balcony 10.5 sq.m

Apartment 305

- Internal area 78.1 sq.m Balcony 8.4 sq.m

Apartment 306

- Internal area 57.6 sq.m Balcony 8.7 sq.m

Apartment 307

- Internal area 78.2 sq.m Balcony 8.7 sq.m

Apartment 308

- Internal area 78.2 sq.m Balcony 11.2 sq.m

Apartment 309

- Internal area 78.4 sq.m Balcony 11.2 sq.m

Apartment 310

- Internal area 78.3 sq.m Balcony 8.7 sq.m

Apartment 311

- Internal area 96.5 sq.m Balcony 8.7 sq.m

Information:

This floor plan is correct as at December 2010. Minor changes may be made to the configuration and fit-out of the building and apartments during construction. Prospective residents should satisfy themselves as to the suitability of the final product before entering an agreement. All occupation licences for units at the village are secured by a first-ranking encumbrance over the village land in favour of the Statutory Supervisor.



Gilberd Apartments - Plan of second floor

Available October 2011



Apartment floor areas

Apartment 312

- Internal area 83.5 sq.m Balcony 11.3 sq.m

Apartment 313

- Internal area 83.3 sq.m Balcony 11.3 sq.m

Apartment 314

- Internal area 78.1 sq.m Balcony 8.4 sq.m

Apartment 315

- Internal area 77.8 sq.m Balcony 10.5 sq.m

Apartment 316

- Internal area 78.1 sq.m Balcony 8.4 sq.m

Apartment 317

- Internal area 57.6 sq.m Balcony 8.7 sq.m

Apartment 318

- Internal area 78.2 sq.m Balcony 8.7 sq.m

Apartment 319

- Internal area 78.2 sq.m Balcony 11.2 sq.m

Apartment 320

- Internal area 78.4 sq.m Balcony 11.2 sq.m

Apartment 321

- Internal area 78.3 sq.m Balcony 8.7 sq.m

Apartment 322

- Internal area 96.5 sq.m Balcony 8.7 sq.m

Information:

This floor plan is correct as at December 2010. Minor changes may be made to the configuration and fit-out of the building and apartments during construction. Prospective residents should satisfy themselves as to the suitability of the final product before entering an agreement. All occupation licences for units at the village are secured by a first-ranking encumbrance over the village land in favour of the Statutory Supervisor.



Gilberd Apartments - Plan of third floor

Available October 2011



Apartment floor areas

Apartment 323

- Internal area 83.5 sq.m Balcony 11.3 sq.m

Apartment 324

- Internal area 83.3 sq.m Balcony 11.3 sq.m

Apartment 325

- Internal area 78.1 sq.m Balcony 8.4 sq.m

Apartment 326

- Internal area 77.8 sq.m Balcony 10.5 sq.m

Apartment 327

- Internal area 78.1 sq.m Balcony 8.4 sq.m

Apartment 328

- Internal area 57.6 sq.m Balcony 8.7 sq.m

Apartment 329

- Internal area 78.2 sq.m Balcony 8.7 sq.m

Apartment 330

- Internal area 78.2 sq.m Balcony 11.2 sq.m

Apartment 331

- Internal area 78.4 sq.m Balcony 11.2 sq.m

Apartment 332

- Internal area 78.3 sq.m Balcony 8.7 sq.m

Apartment 333

- Internal area 96.5 sq.m Balcony 8.7 sq.m

Information:

This floor plan is correct as at December 2010. Minor changes may be made to the configuration and fit-out of the building and apartments during construction. Prospective residents should satisfy themselves as to the suitability of the final product before entering an agreement. All occupation licences for units at the village are secured by a first-ranking encumbrance over the village land in favour of the Statutory Supervisor.



Gilberd Apartments - Plan of fourth floor

Available October 2011



Apartment floor areas

Apartment 334

- Internal area 83.5 sq.m Balcony 11.3 sq.m

Apartment 335

- Internal area 83.3 sq.m Balcony 11.3 sq.m

Apartment 336

- Internal area 78.1 sq.m Balcony 8.4 sq.m

Apartment 337

- Internal area 77.8 sq.m Balcony 10.5 sq.m

Apartment 338

- Internal area 78.1 sq.m Balcony 8.4 sq.m

Apartment 339

- Internal area 57.6 sq.m Balcony 8.7 sq.m

Apartment 340

- Internal area 78.2 sq.m Balcony 8.7 sq.m

Apartment 341

- Internal area 78.2 sq.m Balcony 11.2 sq.m

Apartment 342

- Internal area 78.4 sq.m Balcony 11.2 sq.m

Apartment 343

- Internal area 78.3 sq.m Balcony 8.7 sq.m

Apartment 344

- Internal area 96.5 sq.m Balcony 8.7 sq.m

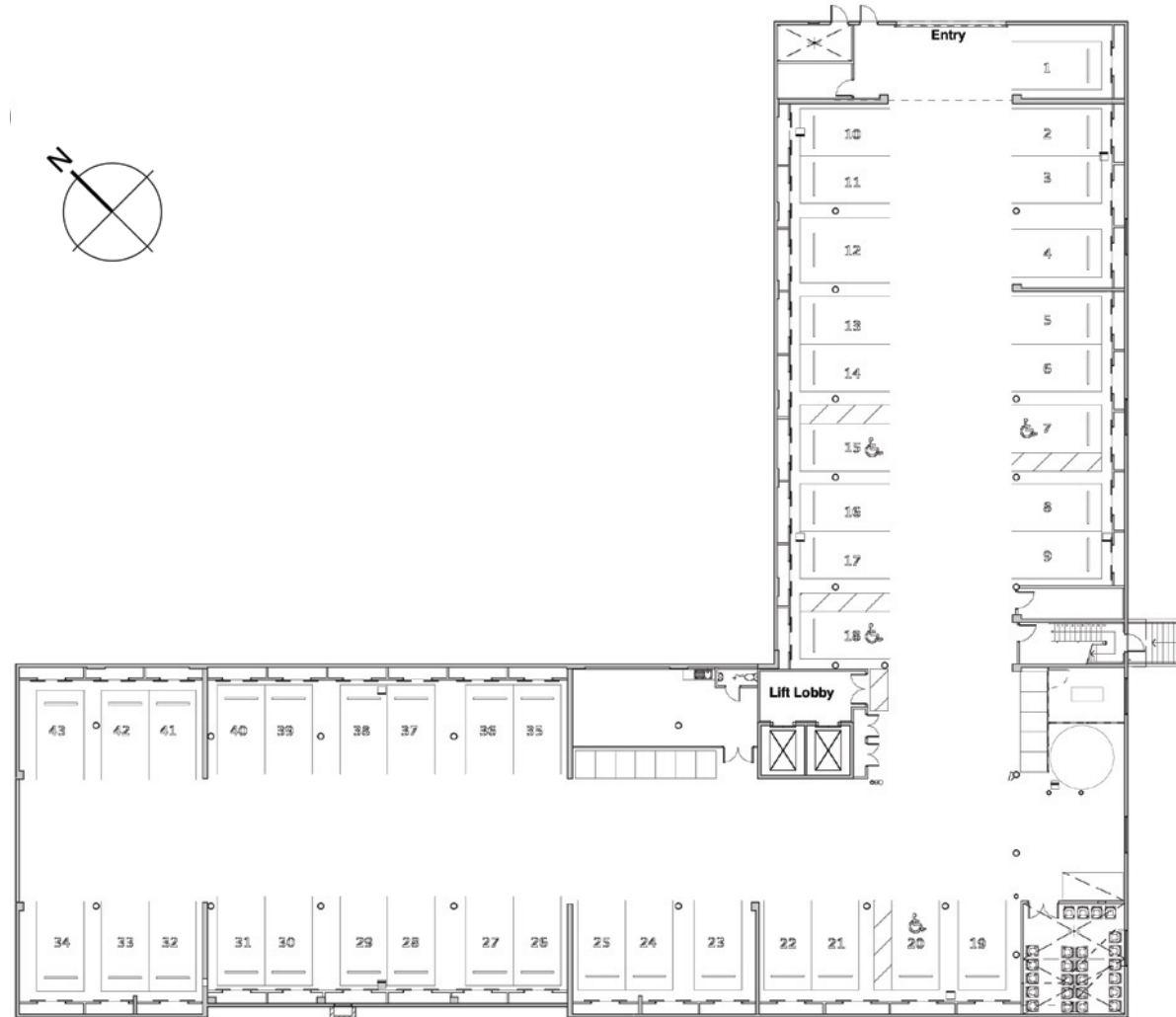
Information:

This floor plan is correct as at December 2010. Minor changes may be made to the configuration and fit-out of the building and apartments during construction. Prospective residents should satisfy themselves as to the suitability of the final product before entering an agreement. All occupation licences for units at the village are secured by a first-ranking encumbrance over the village land in favour of the Statutory Supervisor.



Gilberd Apartments - Plan of Basement

Available October 2011



Information:
This floor plan is correct as at December 2010. Minor changes may be made to the configuration and fit-out of the building and apartments during construction. Prospective residents should satisfy themselves as to the suitability of the final product before entering an agreement. All occupation licences for units at the village are secured by a first-ranking encumbrance over the village land in favour of the Statutory Supervisor.