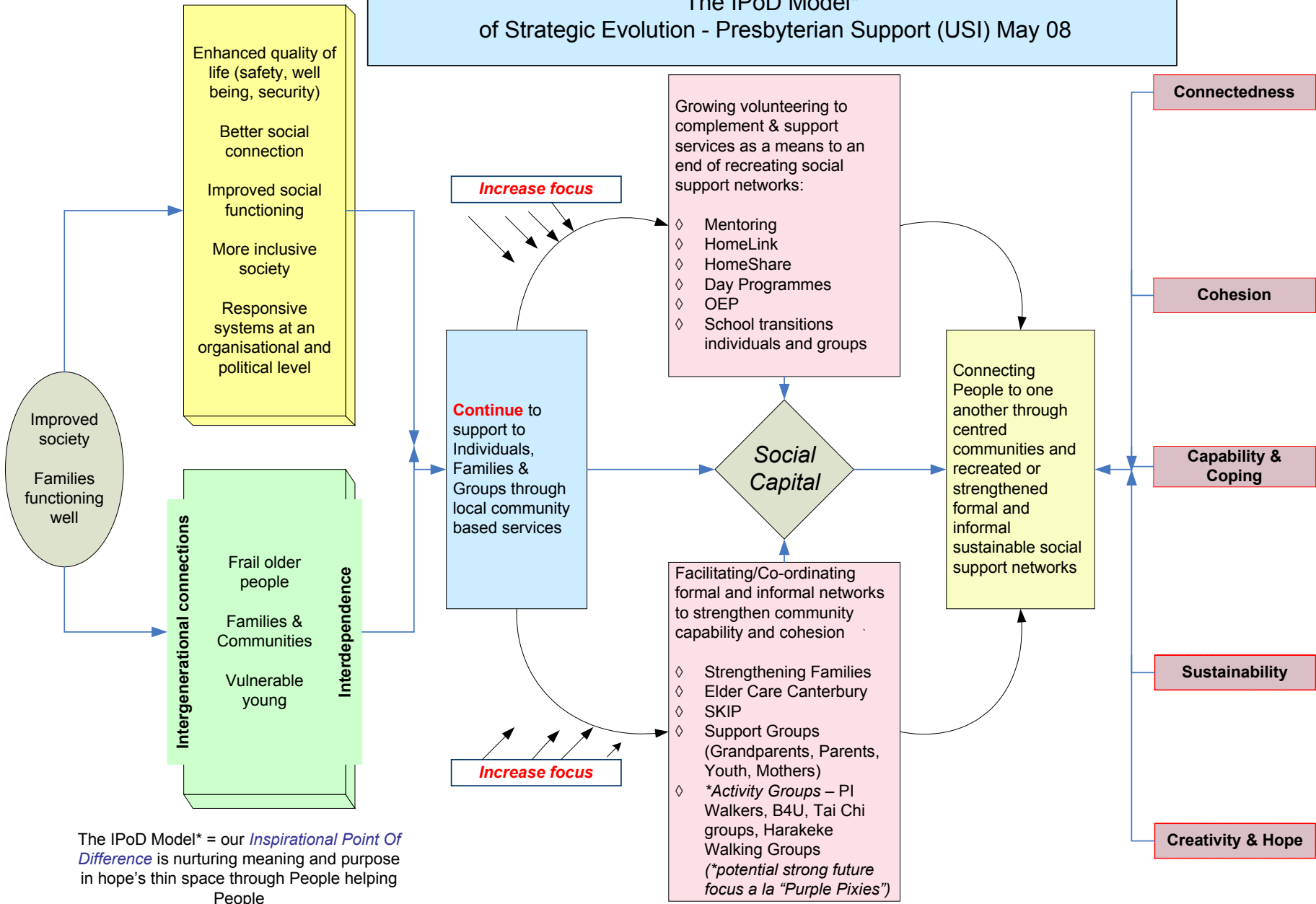




WORK IN HOPE'S THIN SPACE

Vaughan Milner, CEO
Presbyterian Support Upper South
Island

The IPoD Model*
of Strategic Evolution - Presbyterian Support (USI) May 08



The IPoD Model* = our *Inspirational Point Of Difference* is nurturing meaning and purpose in hope's thin space through People helping People

**Driving the IPoD
through our Mission**

COMPASSION
Empathy in action
Moved by others for others
Alert sense of Social Justice through communal aroha

INTERDEPENDENCE
Relational interconnectedness
Receptivity and Joy from reaching out to others
“Grace of Relationships”

SOCIAL JUSTICE
Civil, political, economic, social, cultural and collective rights
Community economic development and environmental rights

IPoD - OUR INNOVATIVE POINT OF DIFFERENCE
Challenges social isolation and social exclusion
Focuses on Cohesion, and connectedness through social capital
Response-able and Resourceful
Links people to one another formally and informally
Links organisations and networks
Improves community



Relational Model

- *Connectedness*

- Respectful, reciprocal (mutual obligation and accountability) relationships between people driven by authentic connection, intimacy, passionate concern and moral engagement – empathy in action.
- A sense of community is nurtured
- Anti-oppressive, values diversity, nurtures social trust.
- Social capital –bonding, bridging linking.
- Interdependence
- Ecological systems theory, transpersonal social work



Relational Model

- *Cohesion*

- Meaningfulness: making sense of life through change and difficulty; having a sense of culture, identity and belonging.
- Manageability: Control over own lives and being able to make good decisions and choices
- Comprehensibility: having a sense of everyday life and surroundings as orderly, consistent and familiar



Relational Model

- *Coping and Capable*
 - Skill sharing, knowledge transfers, strengths orientation, holism, nurturing and developing from what works, response - able, respecting tradition, partnerships, coalitions,
 - Practical help when and where it is needed
 - Empowerment



Relational Model

- *Sustainability*

- Using time generously as a resource; enabling and supporting socially sustainable relationships and networks.
- Access to resources (health, education and housing), intergenerational equity, local self- sufficiency, care of environment, socially just.
- Evolutionary



Relational Model

- *Creativity and Hope*
- Dwelling on and being open to the possible, praxis, matching what we know with what we sense (intuition), (reflexive practice) (imagination) (curiosity)(hope, optimism, passion)
- Trust and good will
- Use of narrative
- Social action, cause advocacy, lobbying, action research that enables voices to be heard and given attention.